

FOLIMAT

Biological Properties

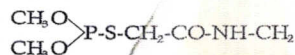
FOLIMAT is a systemic acaricide and insecticide. It is especially suitable for controlling sucking pests such as normally susceptible and "resistant spider mites, aphids, woolly aphids, whiteflies, thrips, scale insects and mealybugs. It also gives good control of biting insects, e.g. caterpillars and beetles.

CHEMICAL AND PHYSICAL PROPERTIES OF THE ACTIVE INGREDIENTS

Chemical name: O,O-dimethyl-S-(2-oxo-3-aza-butyl)-monothio phosphate or
O,O-dimethyl-S-(N-methylcarbamoylmethyl)-phosphorothioate

Common name: Omethoate

Structural formula:



DIRECTION FOR USE

Recommended application rates

Crop	Pest	Application Rate
Ornamentals/Flowers	Aleurodidae (white flies) Aphididae (aphids) Tetranychidae (spider mites) Thysanoptera (thrips)	0.75 - 1.00 l/ha
Vegetables	Aphididae (aphids) Tetranychidae (spider mites) Agromyzidae (leaf miner flies), Aleurodidae (white flies) Thysanoptera (thrips)	1.00 - 2.00 l/ha
Citrus	Aphididae (aphids) Tetranychidae (spider mites) Agromyzidae (leaf miner flies) Pseudococcus spp. (Mealy bugs) Coccoidea (scales)	2.00 l/ha
Coffee	Agromyzidae (leaf miner flies), Aphididae (aphids) Thysanoptera (thrips) Pseudococcus spp. (Mealy bugs) Coccoidea (scales)	1.7 l/ha

FOLIMAT is harmful to bees. Is notable for its generally good plant tolerance at the recommended use concentrations, and it has been established in numerous tests that pome fruit treated with FOLIMAT shows little tendency to develop russetting.

Toxic

General Information:

When applied under favourable growing conditions, Folimat SL 500 rapidly penetrates plant tissue which becomes toxic (stomach action) to both sucking and chewing/biting pests. The contact action of Folimat SL 500 provides additional knock down effects on pests.

Application:

Apply Folimat SL 500 as a full cover spray in suitable volume of water. Ensure thorough and even spray coverage of all plant surfaces.

Mixing and spraying instructions:

Pour the required quantity of Folimat SL 500 into the spray tank half-filled with water and stir well, then top up with water to the required level stirring vigorously. Prepare only sufficient spray mixture for immediate use. Spray immediately after mixing. Spraying should preferably be carried out on dry, windless days. Avoid drifts into other crops, grazing land, rivers, dams or other areas that are not under treatment. Keep bystanders out of the area being treated.

Product compatibility:

Folimat SL 500 is compatible with most commonly used neutrally reacting insecticides and fungicides. Incompatible with alkaline materials. Do not tank-mix with Bordeaux mixture, lime sulphur, wettable sulphur. It is important to consult Arysta LifeScience (K) Ltd. before using any of the products for tank-mix and care should be taken to ensure that tank mixtures are only applied with the recommendations for each product. Physical tank-mix compatibility test should always be carried out prior to mixing commercial quantities.

Crop tolerance:

Folimat SL 500 is well tolerated by crops listed on the label when used as recommended.

Note: As the different species and varieties of ornamentals may differ in their sensitivity to chemical spray, users are advised always to check for crop compatibility by first treating a few plants before large scale application is undertaken.