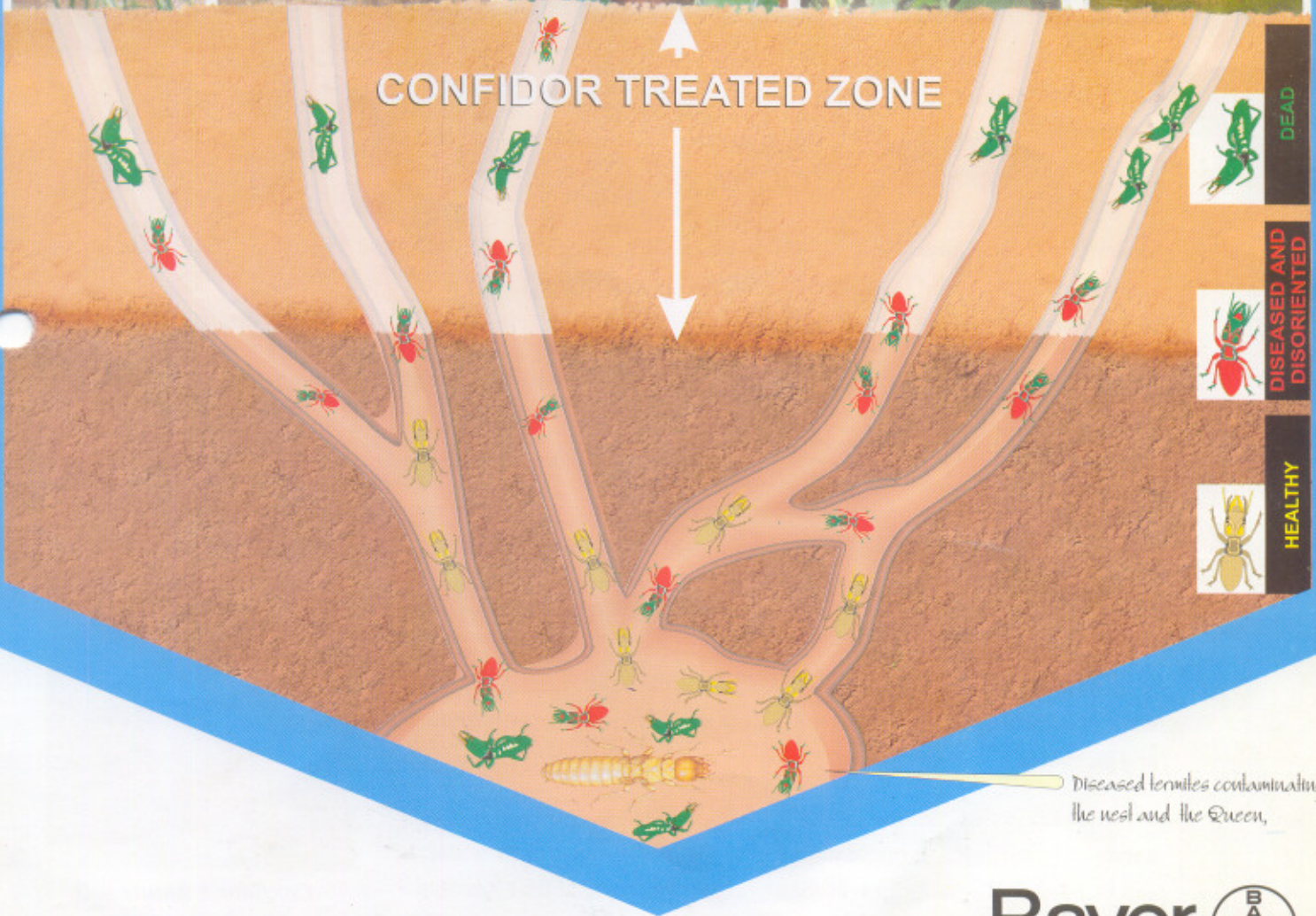


Confidor®

200 SL



Diseased termites contaminating the nest and the Queen.

Maximum Protection against Termites with Confidor
The New Revolutionary Termiticide.



Expertise with Responsibility

Confidor® 200 SL

Confidor® is the new revolutionary solution to termite control in agricultural areas that has been proven effective at very low use rates. The new active ingredient Imidacloprid controls all species of termites in gardens, lawns, flower beds, mounds/anthills, forestry, hedges and wooden structures.

Features

- ▶ **Confidor®** eradicates all major subterranean and other termites at very low use rates.
- ▶ **Confidor®** combines instant kill, disorientation of termites as well as long residual mode of activity.
- ▶ **Confidor®** allows termites to wander unsuspectingly into the treated soil.
- ▶ **Confidor®** has a new mode of action that disrupts the social behaviour that termites depend on.
- ▶ **Confidor®** has moderate water solubility - moves with wetting front of the soil (drench the area to be treated first).
- ▶ **Confidor®** binds to the soil particles when the soil dries up. This ensures continuous treated zone.
- ▶ **Confidor®** has very low mammalian toxicity but extremely toxic to termites.
 - ▶ no unpleasant odour
 - ▶ does not leave marks or stains on the treated area.

Termites are Destructive by Nature

Termites are social insects and the most destructive in nature. The best way to stop termites from this destruction is to use an effective termiticide - **Confidor®**!

Breaking the Barrier

Conventional soil applied termiticides form a protective barrier around the target crop, area or structure, in order to kill termites. **Confidor®** is the revolutionary solution. Its innovation offers a termiticide which is non repellent, no odour, thus allows termites to enter Treated Zone unsuspectingly. Conventional termiticides allow termites to actively seek out the gaps and gain entry to the un-treated zone..

Confidor® Treated Zone is not detected by termites hence termites will enter unsuspectingly and die.

Inside The Treated Zone

Good distribution throughout the soil is essential in establishing an effective Treated Zone. **Confidor®** is moderately water soluble. It has a Lateral Soil Movement (LSM) in all types of soils.

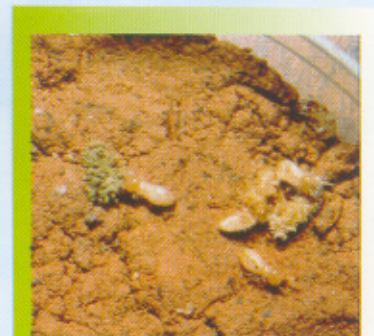
Confidor® continues to move slowly in the soil for several days after application. When the water dissipates **Confidor®** binds strongly to soil particles thus creating continuous barrier with no breaks or weak spots.

Confidor® Plus Nature

This combination is the key to successful termites control. Termites are either killed instantly or become disorientated and dysfunctional - stop feeding, impaired co-ordination, unable to return to their nests - later on die of hunger and insecticidal action of **Confidor®**.

Even low doses of **Confidor®** will affect termites behaviour. They will wander into open air, sunlight where they are vulnerable to dehydration and predators.

Termites cease their natural grooming habits which keeps them free of naturally occurring soil borne pathogens. The soil fungi will then attack and kill them. These fungi will then multiply in the dead termites and affect more termites. This is an additional mode of action of **Confidor®**



*Confidor + nature soil
attack on termites*

DIRECTIONS FOR USE

The purpose of chemical soil treatment for termite control is to establish a continuous chemical barrier between the target crop, material and the termite colony in the soil.

Application Rates and Timing

Anthills/Mounds

- Drive a rod into the anthill to clear the opening.
- Drench the mound with 20 - 40 litres water (depending on the size of the mound).
- Using **Confidor**[®] rate of 2.5 ml/1 litre of water, make a solution of 10 litres and apply in the anthill.

Trees

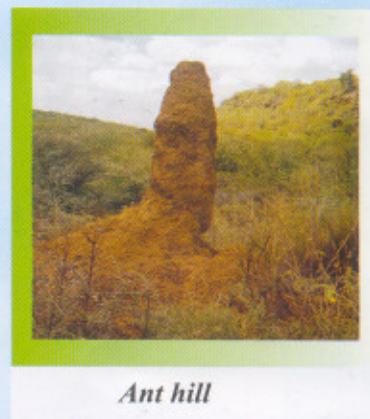
- Drench the base of the tree with adequate amount of water.
- Mix 2.0 ml **Confidor**[®] with 1 litre water and apply at the base of the tree.

Newly established crops/fruit trees/vines, etc.

- Drench the base of the plant with adequate amount of water.
- Mix 1.5 ml **Confidor**[®] with 1 litre water then apply at the base of the tree.
- **NB:** recommended at the nursery stage as well as at the time of transplanting.



Termite nest



Ant hill



Active termites in their nest



Magnified termites

Notice to user

Always carefully read and follow the label directions on the container.

Confidor[®] is user friendly Except for **Termites!**